

Intervention Package for KPIS

Nancy Phaswana-mafuya, Batlile Maseko, Clarence Yah,
Witness Chirinda, Carolyn Brown, Yunru(Claire) Lai

Presenter: Yunru(Claire) Lai

CDC-HSRC meeting, Port Elizabeth

July 21, 2014

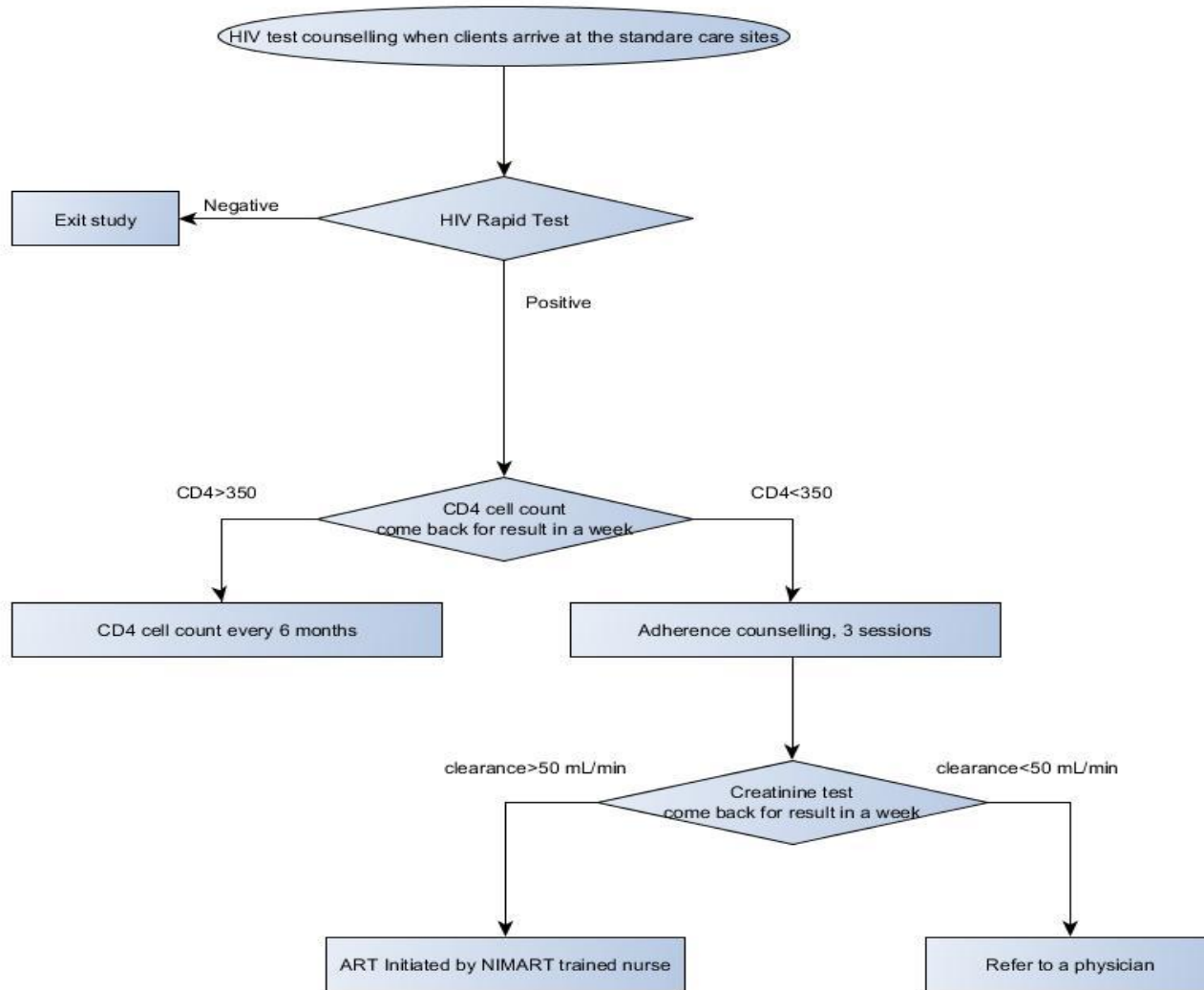
Contents

1. Standard care

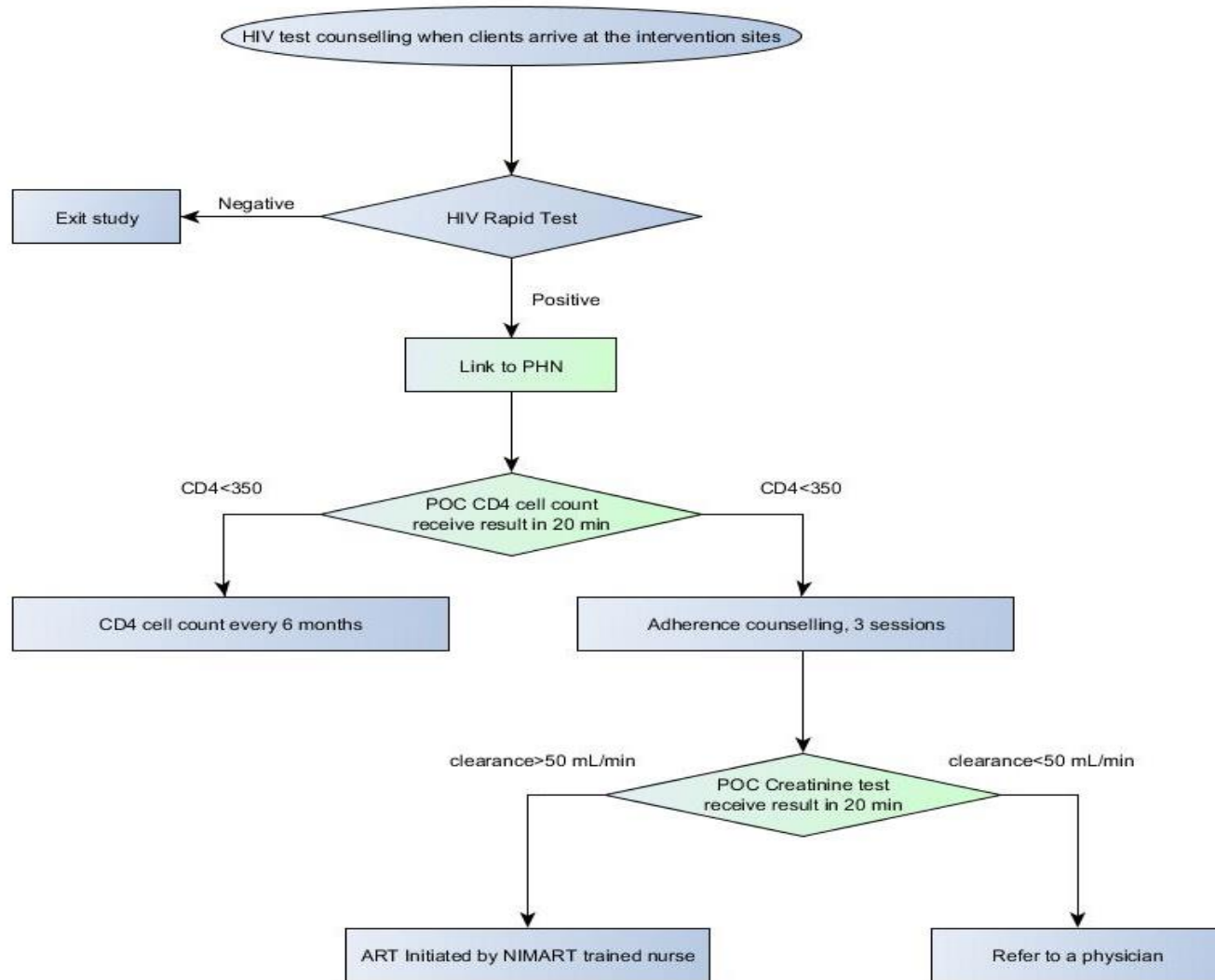
2. Intervention package

- Decentralized HIV testing and counseling
- Point of care(POC) HIV and creatinine testing
- Peer health navigator (PHN) adherence support

Standard Care



Intervention



Decentralized HIV Testing and Counselling

- **Increased HIV testing and awareness of serostatus**
 - Among HIV- positive MSM screened by the CBO:
 - 25.5% increase on receiving their confirmatory test results ($p < 0.001$)
 - 48.4% increase on linkage to care ($p < 0.001$)

(Yan, et al. 2014)

Point of care testing(POC)

- **Reduce the time to eligibility assessment for ART**
 - Time to being tested was significantly reduced by a median of 9 days
 - Time from CD4 testing to receiving the result was reduced by as much as 17 days
- **Increase retention in care prior to treatment initiation**
 - Have CD4 measured: OR=4.1, 95%CI 3.5-4.9
 - Receive a CD4 result: OR=2.8, 95%CI 1.5-5.6

(Wynberg, et al. 2014)

Point of care testing(POC)

- **POC CD4 testing** (The Alere Pima™ CD4 test):
 - Results will be available within 20 minutes, and will be offered to the client at that time
 - During waiting time, clinical staging and TB screening can be performed.
- **POC creatinine testing:**
 - Results will be available within 20 minutes.
 - During waiting time, pre-ART counselling sessions can be performed.

Peer Health Navigator(PHN)

- **Mixed effect from previous studies**
 - PHN increases HIV knowledge and condom use
 - PHN helps reduce structural barriers
 - PHN generates higher levels of hope for people living with HIV/AIDS(PLWHA) in well-functioning families

(Bradford, et al. 2007; Medley, et al. 2009; Masquillier, et al. 2014)

Potential Roles of PHN

- Role model
- Emotional support

Psychological

Educational

Medical

Social

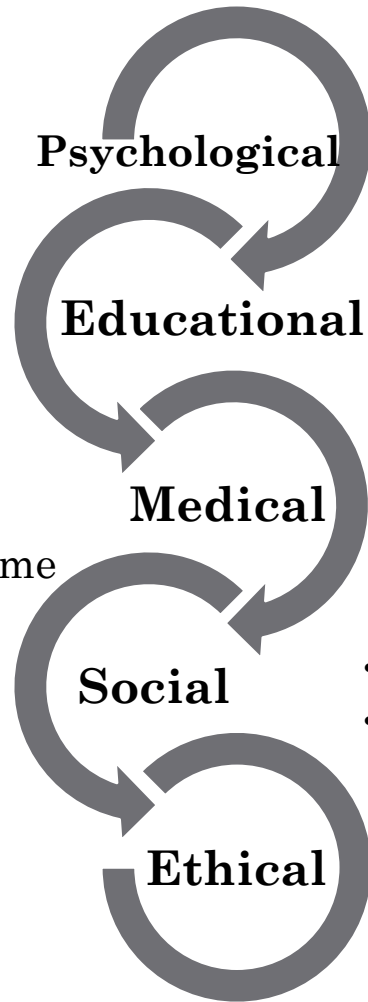
Ethical

- Referral to care
- Maintenance in care
- Monitor health outcome

- Knowledge about disease and risk factors
- Knowledge about treatment
- Knowledge about their condition
- Knowledge about medical system

- Avocation
- Destigmatization

- Confidentiality
- Boundaries



Evaluation of Interventions

- **To evaluate the efficacy of intervention package:**
 - The proportion of HIV-positive men who enter care
 - The proportion who receive their CD4 results
 - The proportion of treatment eligible men who initiate treatment and who are retained in care
 - The proportion of treatment ineligible HIV-positive men who are retained in care before and after intervention at delayed onset sites
- **To evaluate the uptake of individual study interventions:**
 - The proportion of men offered and accepting HIV testing, POC CD4 testing, on-site treatment initiation, and peer navigation services.

Reference

- 1. Bradford JB, Coleman S, and Cunningham W. HIV System Navigation: An Emerging Model to Improve HIV Care Access. *AIDS patient care and STDs*, 2007, 21(1):s49-s58.
- 2. Masquillier C, Wouters E, Mortelmans D, and Booyesen F. Families as catalysts for peer adherence support in enhancing hope for people living with HIV/AIDS in South Africa. *Journal of the International AIDS Society*, 2014, 17:18802
- 3. Medley A, Kennedy C, O'Reilly K, and Sweat M. Effectiveness of peer education interventions for HIV prevention in developing countries a systematic review and meta-analysis. *AIDS Educ Prev*. 2009 June ; 21(3): 181–20
- 4. Wynberg E, Cooke G, Shroufi A, Reid SD, and Ford N. Impact of point-of-care CD4 testing on linkage to HIV care: a systematic review. *Journal of the International AIDS Society*, 2014, 17:18809
- 5. Yan H, Zhang R, Wei C, Li J, Xu J, Yang H, McFarland W. A peer-led, community-based rapid HIV testing intervention among untested men who have sex with men in China: an operational model for expansion of HIV testing and linkage to care. *Sex Transm Infect*, 2014, 90:388–393