



A personal story of travelling a journey to a doctoral degree

By Nomusa Biyela

12-14 August 2015

**IFLA Pre-Conference:
CPDWL**



Outline

- Introduction
- Phases of the journey (structured in line with the school)
 1. Statement of intent
 2. Systematic review of sources consulted and why?
 3. Research methodology and why chosen?
 4. Proposal writing
 5. Dissertation / academic writing
 - 6. Data collection; analysis & interpretation**
 7. Conclusion

Introduction

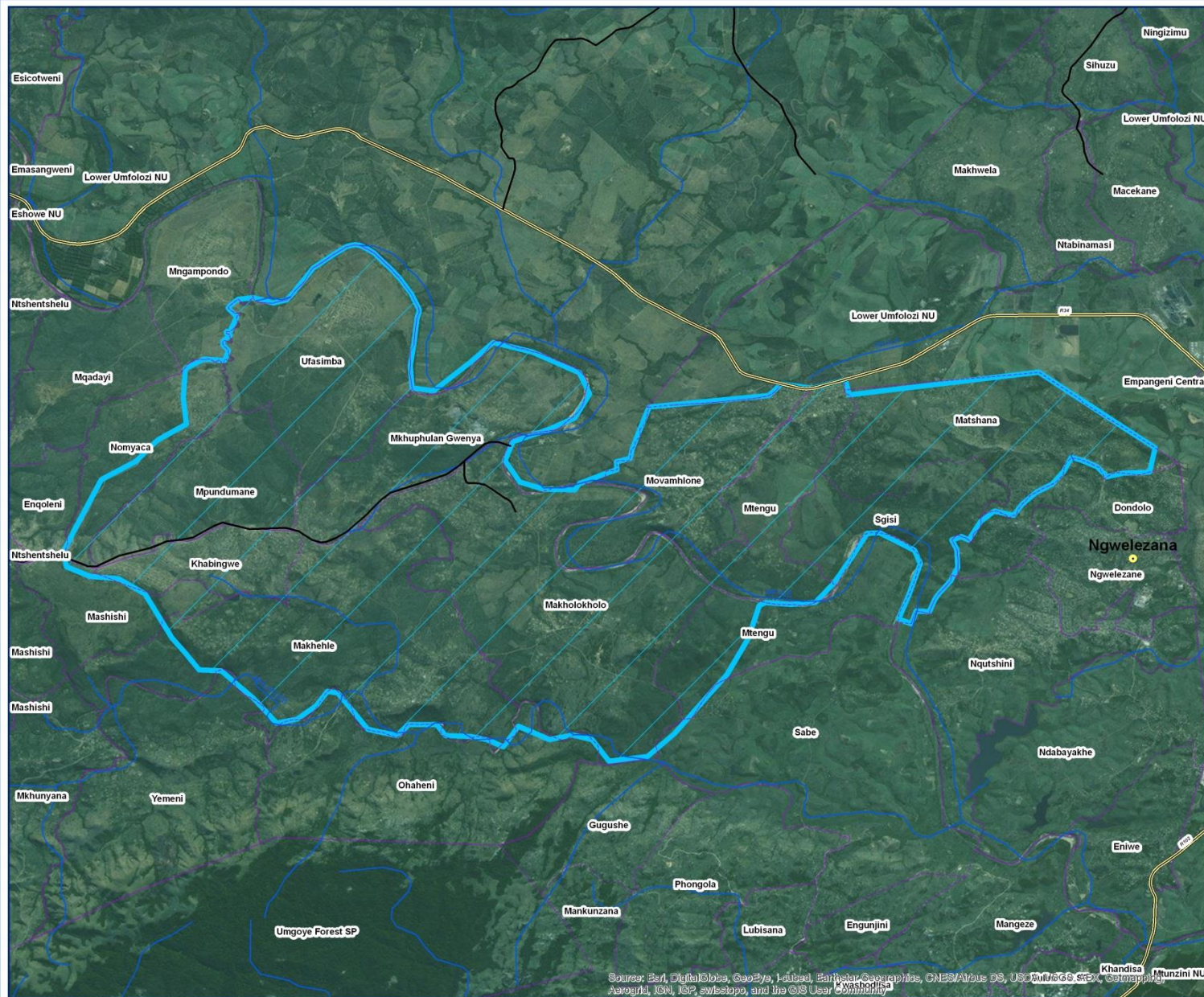
- ❑ Ranko-Ramaila, Mathipha & Gumbo (2014:4)
 - 90% resilience and perseverance and probably one percent intellect.
 - Resilience - success despite adversity.
 - Supervisor/student relationship critical
 - Mathipha, E. R.; Gumbo, M. T. 2014. *Addressing research challenges: making headway for developing researchers*. Noordwyk, South Africa : Mosala-Masedi Publishers
 - ISBN: 978-1-920580-08-7

Statement of intent

1. What was the topic selected?
2. Why it was chosen?
3. How it was going to be researched?

NRF (2006) in Green (2007) defines IKS as a complex set of knowledge and technologies existing and developed around specific conditions of populations and communities indigenous to a particular geographic area and their interfaces with others.

Ndlangubo Study Area



Legend

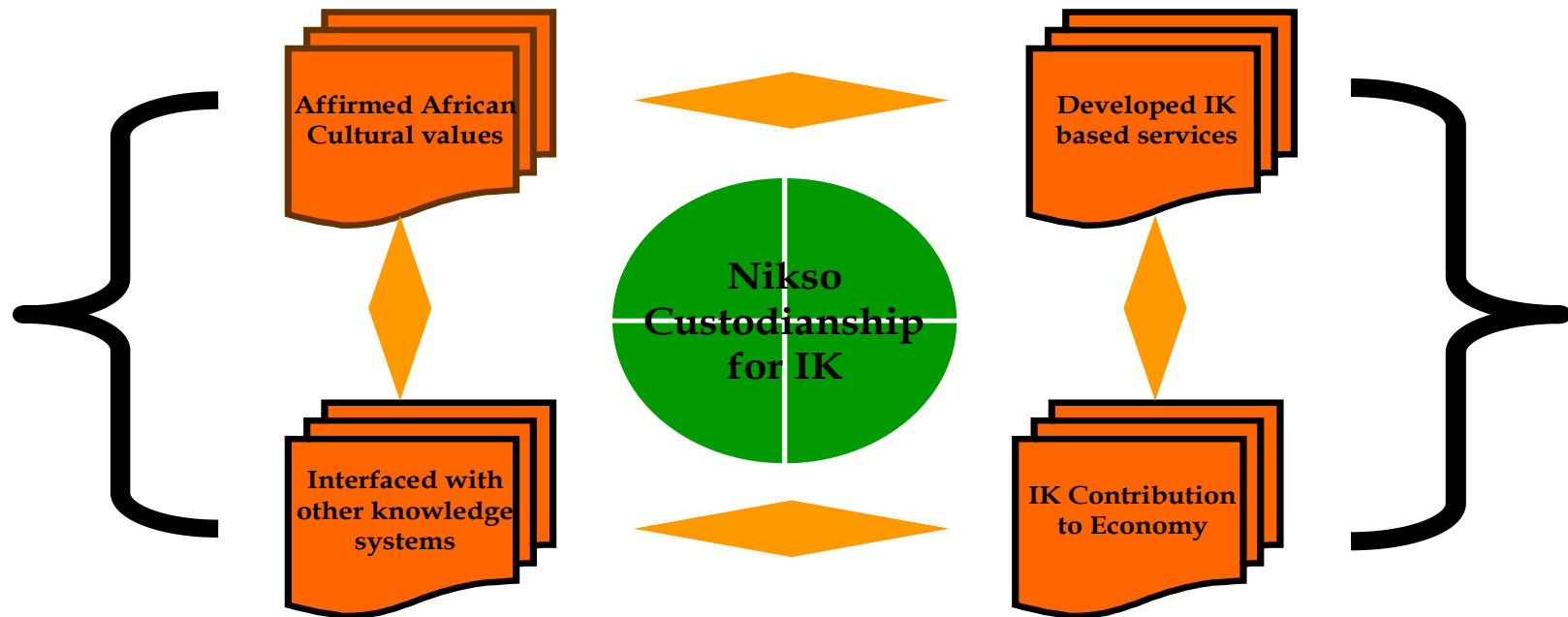
- MainTown
- Secondary Roads
- Main Roads
- National Roads
- Rivers
- SubPlaces
- Study Area



Source: Esri, DigitalGlobe, GeoEye, Earthstar Geographics, CNES/Airbus DS, USDA/USGS, AeroGRID, IGN, IGP, swisstopo, and the GIS User Community

IKS Policy Framework (DST 2010)

NIKSO'S STRATEGY CONTEXT



Internal Strength

Batho-Pele Principles
Internal Communication
IK development in SADC & Africa

Customer Focus

Increase flow of IK products
Increase SA IK patents
Database and databank
Initiate and facilitate IKS Act

Stakeholder Relations

Stakeholder relations strategy
Value Chain Management

Community Participation

Platform for participation
IKS Centers among communities
Improve public understanding

Market Position

Brand communication strategy
Trusted & capable IK custodian

Systematic review of sources

1. IK management and preservation

- Anwar (2010); Elia, Mutula & Stilwell (2014); Hart & Aliber (2010); Hart & Vorster (2006); Lwoga, Ngulube & Stilwell (2010); Ngulube (2002)
- Ocholla & Onyacha (2005); Raphesu (2010)

2. The role of libraries

- Akinwale (2012); Chisenga (2002); Chisita (2011); IFLA (2002); Makinde & Shorunke (2013); Mugwisi (2014); Raju & Raju (2010)

3. The South African (SA) IKS Policy (2004) Need to integrate IK with other knowledge systems

- Green (2007); (2008)

4. The SA Intellectual Property Laws Amendment Bill (2007) - Need for a Social Contract based on Social Justice like Commutative Justice; Contributive; Distributive & Retributive (Britz & Lor 2004)

Research methodology

Paradigm

- **Constructivism**
- Symbolic interactionism approach used to understand participants in their natural settings. Data analysed in line with time, place, culture, and context, but also reflects the researcher's analytical thinking (Charmaz in Gubrium & Holsteim 2002:677).

Methodology

- **Qualitative**
- Uses a naturalistic in-depth inquiry in order to explore the studied phenomenon (Creswell 2008: 46)

Design

- **Grounded Theory**
- Uses systematic inductive approach to inquiry followed by a constant comparison of categories in order to generate theory grounded in data. It is an iterative, comparative, interactive and abductive method (Charmaz in Denzin & Lincoln 2011:360-361).

Methods

- **Techniques**
- Focus groups
- Interviews - Semi-structured
- Participatory methods - RRA/PRA/PLA
- Observation

2 Legs: Proposal writing & Dissertation

Research Proposal	Dissertation
<ul style="list-style-type: none"> Proposed title Introduction Background/rationale Research problem and objectives Definition of key concepts 	<ul style="list-style-type: none"> Chapter One
<ul style="list-style-type: none"> Scholarly or literature review 	<ul style="list-style-type: none"> Chapter Two
<ul style="list-style-type: none"> Research methodology Research methods Research design Instrumentation & data collection techniques Ethical protocol Reliability & validity 	<ul style="list-style-type: none"> Chapter Three
<ul style="list-style-type: none"> Data presentation Data analysis & interpretation Summary of the results 	<ul style="list-style-type: none"> Chapter Four Chapter Five Chapter Six
<ul style="list-style-type: none"> Outline of chapters Time-frame Budget 	
<ul style="list-style-type: none"> References 	References

Data collection; analysis & interpretation

Strengths

In-situ preservation strategies

Crop farming
Livestock keeping
Beadwork & Traditional attires
Grass-mat making
Woodwork
CoGTA Projects
Primary Schools Curriculum

Weaknesses

Lack of collection development policies
Lack of co-ordinated social structures
Low levels of IL skills
Lack or limited knowledge about IP laws; Libraries, ICTs & Entrepreneurship

Opportunities

IKS Policy – use IK for socio-economic development
Develop IK collection policies
Develop co-ordinated social structures
Integrate indigenous & exogenous methods

Community & the Role of a Librarian

Threats

Loss of IK or limited use of IK for economic development
Fragmented IK management activities & unsustainable COPs
Poor crop yields , Poverty & Hunger
High death rate of livestock
Failure to manage natural disasters







SWOT Analysis through images





















Strong Libraries for Development

- **IFLA mandate**: Dynamic Libraries: Access, Development & Transformation
- **CPDWL mandate**: Global partnership to support ongoing work
- **LIASA mandate**: Libraries for Development, Action, Integration & Collaboration
- **UNISA Information Science mandate**: Taking Libraries to the people through Community Outreach Projects
- **HSRC mandate**: HSRC that makes a difference in Africa and globally
- **South African government**: DST (National System of Innovation) & DAC (Mzansi Golden Economy) – using IK for the socio-economic development

Conclusion

MY PLEA is to send out a call or invitation to the Information Professionals willing to share ideas on how we can collaborate (Global partnership) in order to start a Cultural Information Centre and thus cater for the identified Information Needs of the Community Members (especially women) in the Area of Study.

THANK YOU

- NBiyela@hsrc.ac.za

